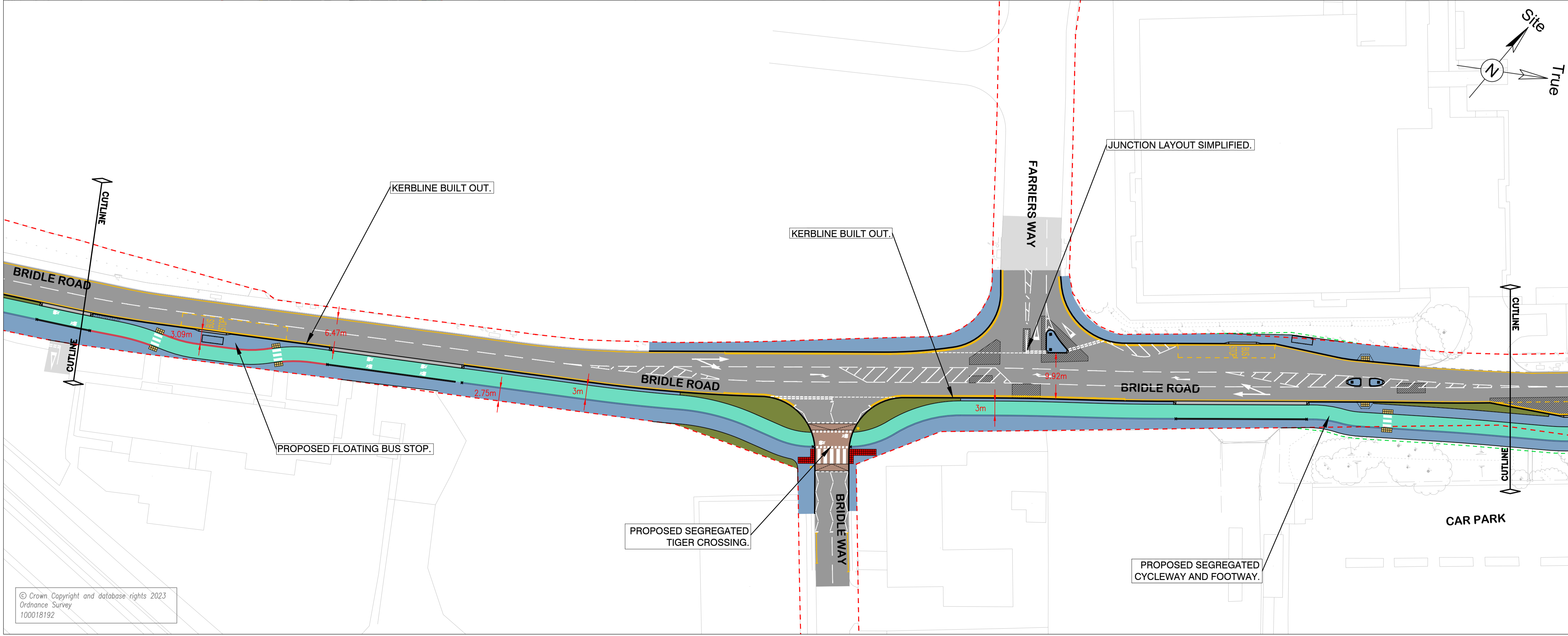


- LAND & BOUNDARY KEY:**
- - - EXISTING HIGHWAY BOUNDARY
  - - - PROPOSED HIGHWAY BOUNDARY
- SURFACE FINISHES KEY:**
- RE-SURFACED CARRIAGEWAY
  - PROPOSED CARRIAGEWAY CONSTRUCTION
  - RE-SURFACED OR NEW FOOTWAY
  - NEW SEGREGATED CYCLEWAY
  - SHARED USE FOOTWAY / CYCLEWAY
  - NEW RAISED ENTRY TREATMENT
  - SOFT LANDSCAPING
  - EXISTING CARRIAGEWAY



Rev	Description	Date	Drawn	Approved
P03	SEFTON AMENDMENTS	04/07/23	DS	CC
P02	LCA AMENDMENTS	12/05/23	DS	CC
P01	FOR CONSULTATION	16/02/23	DS	CC

**Sefton Council**  
 Magdalen House, 30 Trinity Road, Bootle, Merseyside, L20 3NJ  
 Tel: 0151 934 2000

**FOR CONSULTATION**

Scheme  
**MARITIME CORRIDOR  
 ACTIVE TRAVEL  
 DETAILED DESIGN**

Drawing Title  
**BRIDLE ROAD CYCLEWAY  
 GENERAL ARRANGEMENT  
 (Sheet 1 of 2)**

Directory	Designed	Drawn	Checked	Date
	DS	DS	CC	15/02/23

Drawing No.	Rev	Scale
MARIT/AT/BRDW/01	P03	1:500

© Crown Copyright and database rights 2023  
 Ordnance Survey  
 100018192