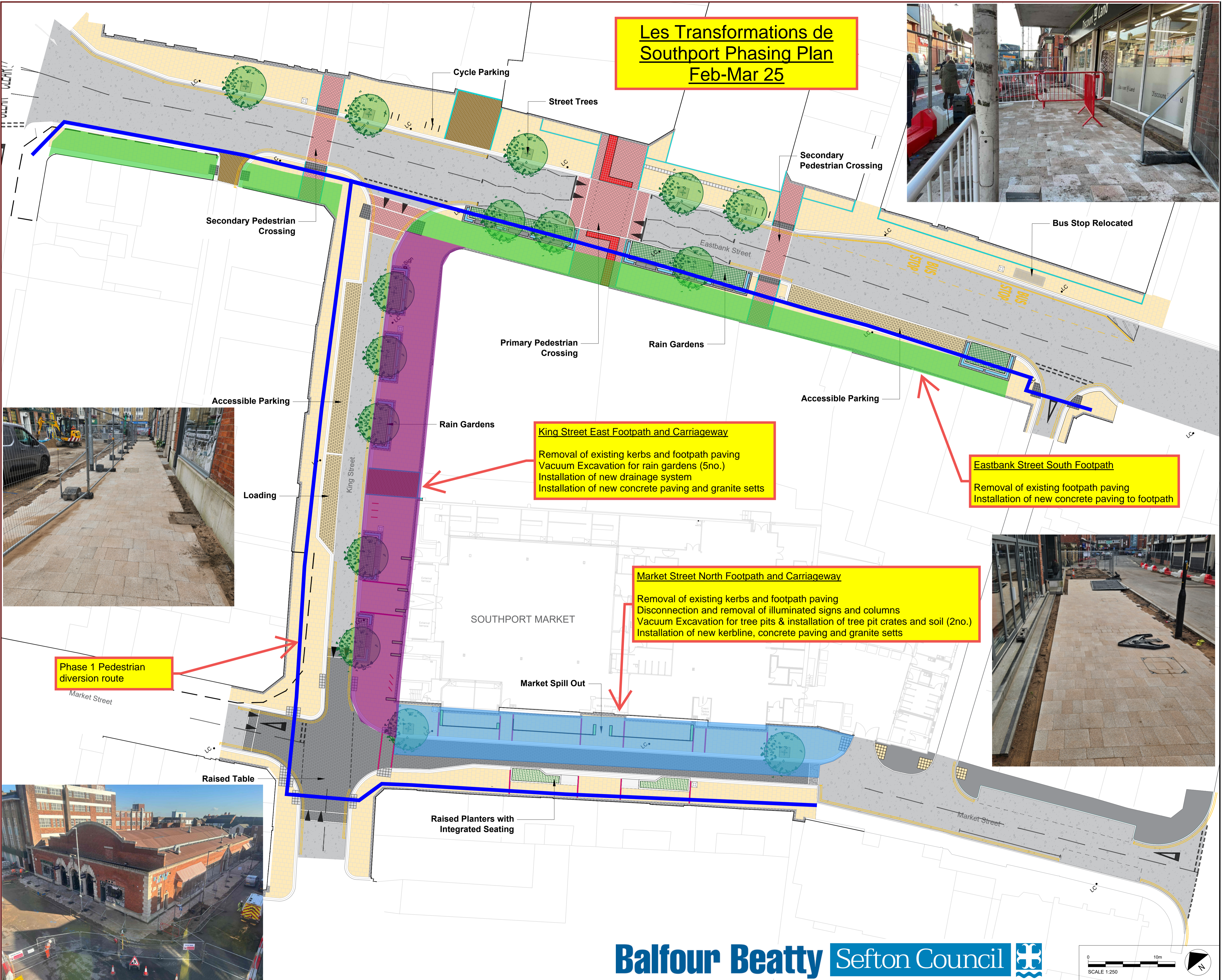


**Les Transformations de
Southport Phasing Plan
Feb-Mar 25**



Bus Stop Relocated



King Street East Footpath and Carriageway
 Removal of existing kerbs and footpath paving
 Vacuum Excavation for rain gardens (5no.)
 Installation of new drainage system
 Installation of new concrete paving and granite setts

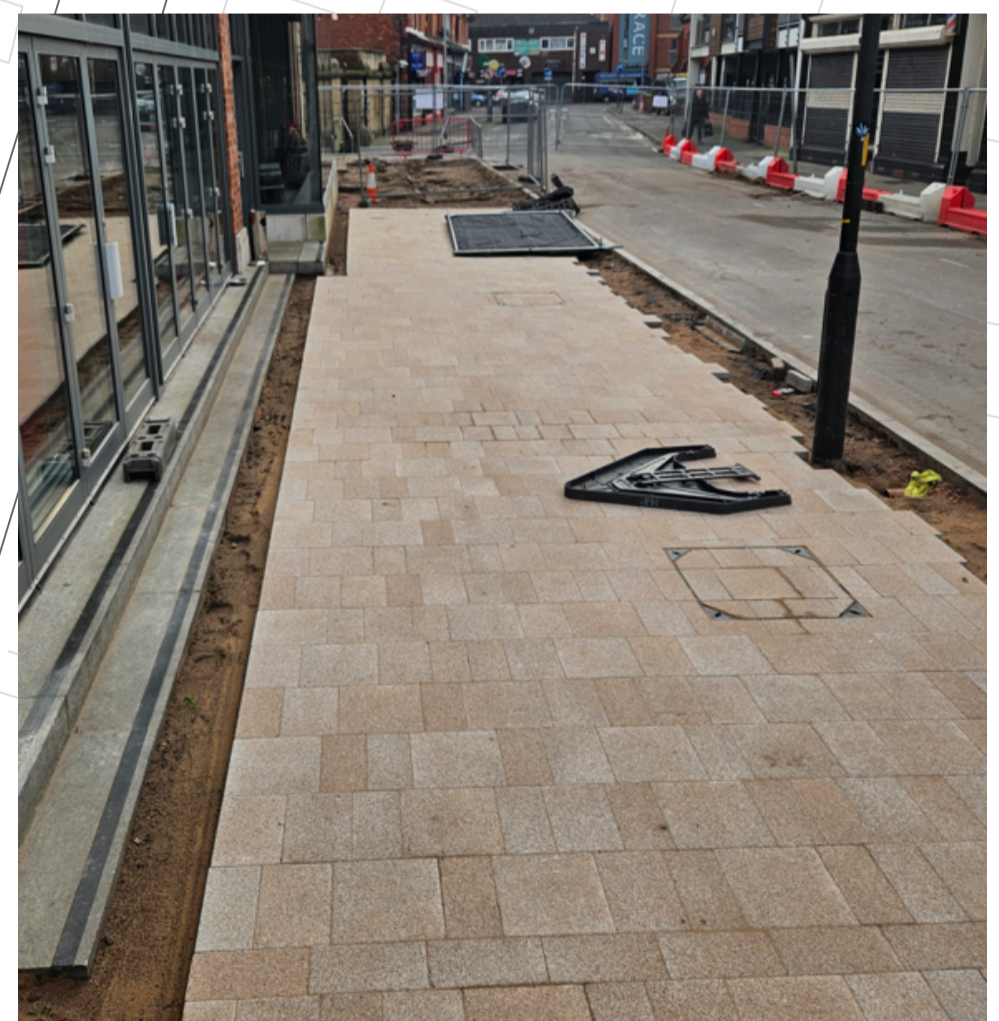
Eastbank Street South Footpath
 Removal of existing footpath paving
 Installation of new concrete paving to footpath

Market Street North Footpath and Carriageway
 Removal of existing kerbs and footpath paving
 Disconnection and removal of illuminated signs and columns
 Vacuum Excavation for tree pits & installation of tree pit crates and soil (2no.)
 Installation of new kerbline, concrete paving and granite setts

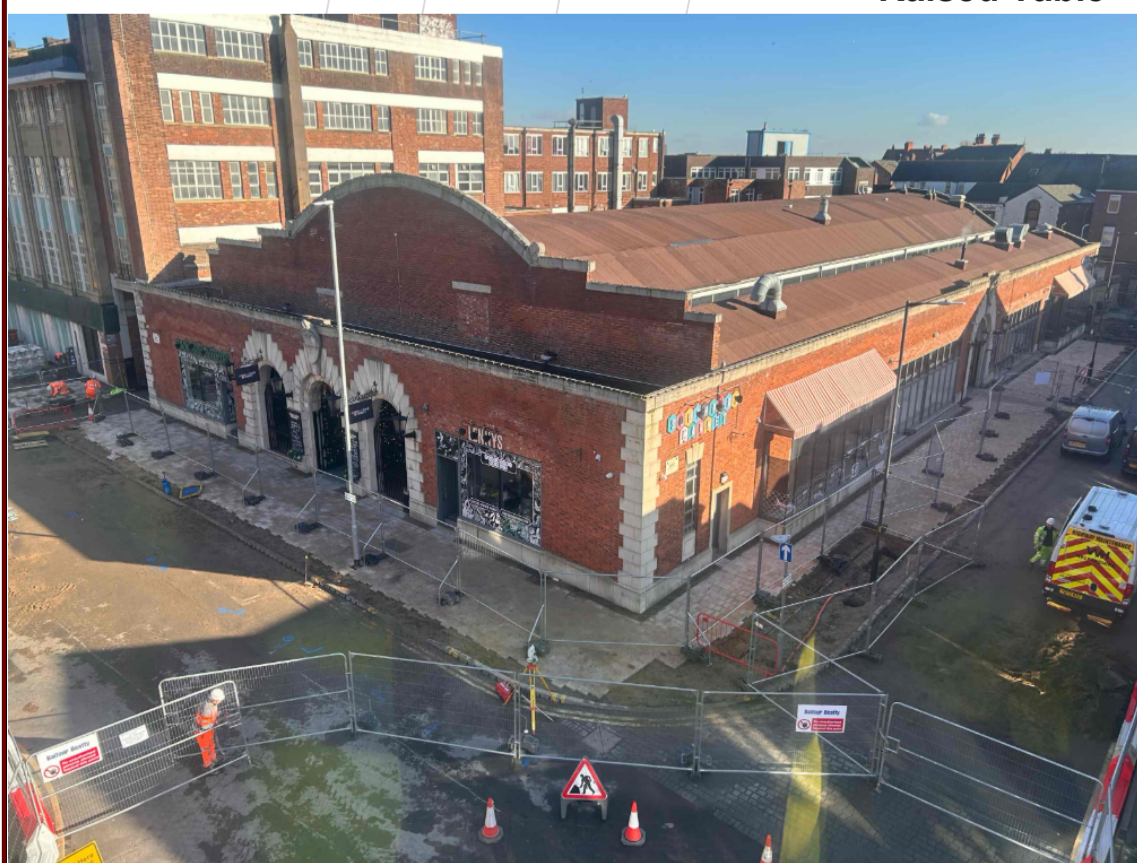
Phase 1 Pedestrian diversion route



Loading



Raised Table



Raised Planters with Integrated Seating

File name: C:\Users\jmc088\OneDrive\Documents\Public\REALM\DD\PH1_DOCUMENTS\LANDSCAPE\REVISED\CAD\DM\MOCS\10113175_MSP\BANK\LA\03090007.DWG, printed on 19 December 2024 17:49:38, by Camron, James
 This drawing may contain: Ordnance Survey data © Crown copyright and database right 2023.